

# Auto Sentry® Petro

Installation Guide - Version 4.0



Information in this manual is subject to change without notice. The example companies, organizations, products, domain names, email addresses logos, people, places and events depicted herein are fictitious. No association with any real company, organization, product, domain name, email address, logo, person, place or event is intended or should be inferred unless otherwise noted. No part of this manual may be reproduced or transmitted in any form or by any means, electronic or mechanical, for any purpose without the express written permission of Innovative Control Systems, Inc. (ICS)

ICS and its product trademarks in this manual are trademarks of Innovative Control Systems. All other marks are property of their respective owners.

© 2021 Innovative Control Systems, Inc. All rights reserved.

Innovative Control Systems, Inc.  
81 Highland Avenue, Suite 300  
Bethlehem, PA 18017  
(610) 881-8100

# Contents

Chapter 1: Site Layout . . . . .	5
Location . . . . .	5
Auto Sentry® Petro Power Requirements . . . . .	5
Auto Sentry® Petro Wiring Guidelines . . . . .	5
Conduit Wiring Guidelines . . . . .	6
Equipment Dimensions, Measurements, and Ratings . . . . .	6
Grounding . . . . .	7
Recommended and Accepted Grounding Methods . . . . .	7
Wire Gauge and Conduit Size . . . . .	8
Auto Sentry® Petro In-bay Layout . . . . .	9
Auto Sentry® Petro Placement Front and Side View . . . . .	10
Auto Sentry® Petro Dimensions . . . . .	11
Auto Sentry® Petro Placement Top View . . . . .	12
Chapter 2: Molded Plastic Installation . . . . .	13
Attaching the Auto Sentry® Petro to the J Bolts . . . . .	13
Roto Molded Plastic Installation . . . . .	14
Chapter 3: System Wiring . . . . .	23
Warning Symbol . . . . .	23
Auto Sentry® Petro AC Power Terminations . . . . .	24
Programming Sonic Sensor for Sense Car . . . . .	24
Power Wiring Layout . . . . .	25
Control Box Terminations . . . . .	26
In-Bay Controller Wire Terminations . . . . .	27
In-Bay Wiring Layouts . . . . .	28
Network Communication Layout . . . . .	28
Chapter 4: Communications Wiring . . . . .	29
Installation Requirements . . . . .	29
System Network Cables . . . . .	30
Chapter 5: Parts Identification . . . . .	31
Exterior Components (Front View) . . . . .	31
Power Terminal Blocks . . . . .	33
Interior Front Door Components . . . . .	34
Interior rear left-side of Auto Sentry® Petro . . . . .	35

Interior Rear Door Components . . . . .36

Interior right-side . . . . .37

Roto Molded Auto Sentry® Petro Parts . . . . .38

Document Change History . . . . .39

# CHAPTER 1: Site Layout

Careful planning for the layout of the site will help eliminate possible problems with the startup of your system. This document is intended to provide instructions to properly install the Auto Sentry® Petro to ensure continued, reliable system operation.

- All site wiring must be performed by a licensed electrician that must comply with all local and national codes.
- Permanent connections to be installed and used in accordance with building/fire codes.

## Location

---

- The Auto Sentry® Petro has been designed to operate in an outdoor environment.
- The unit itself contains two hinged-panel doors, one on the front and one on the back of the unit. The Auto Sentry® Petro must be located with enough clearance for the doors to open easily without obstructions.
- The unit must be located so that conduit connections can be easily made and the internal components can be accessed.

## Auto Sentry® Petro Power Requirements

---

- Electrician must provide one 15 Amps @ 120 VAC dedicated circuit to power the unit.
- The unit must be properly grounded. See “Grounding” on page 7 for more information.

## Auto Sentry® Petro Wiring Guidelines

---

- Run conduit and wires up through the center of the stainless-steel base into the unit.
- For an existing site, use a hole saw to drill new conduit holes through stainless steel base if necessary. File and tape edges of new holes before affixing conduit.
- Use wiring ties and wire clamps inside unit to contain wires.
- All conduit runs should meet local and national codes. Conduits shall be properly connected and securely fastened to the boxes with listed conduit hubs, and should be tightened to the torque specs of the manufacturer.

## Conduit Wiring Guidelines

- All conduit must be rigid PVC or metal.
- High-voltage (AC) and low-voltage (DC) must not be combined in a common conduit, junction box, or wire trough.

## Equipment Dimensions, Measurements, and Ratings

When mounting the unit, minimum clearances must meet local recommended standards.

Dimension	Amount	Notes
Width	32 1/2"	—
Height	55 1/2"	—
Depth	17"	Includes heat exchanger cover panel.
Weight	250 lbs.	—
Operating Temperature Range	-20 °F to 120 °F -29 °C to 48 °C	—
Frequency	50/60 Hz	—
Supply Voltage	120 VAC	Intended for permanently connected supply.
Max. Amps.	10 Amps @ 120 VAC 6 Amps @ 240 VAC	—
IPX Rating	NEMA 4X	Enclosures constructed for either indoor or outdoor use to provide a degree of protection to personnel against incidental contact with the enclosed equipment; to provide a degree of protection against falling dirt, rain, sleet, snow, windblown dust, splashing water, and hose-directed water from water jets at any direction; and that will be undamaged by the external formation of ice on the enclosure. Including protection against corrosion.

**Table 1: Dimensions, Measurements and Ratings**

## Grounding

---

The Auto Sentry® Petro and peripheral equipment must be properly grounded.

### Recommended and Accepted Grounding Methods

Proper system grounding is an extremely important part of the system installation. Grounds for all system devices should be wired to the breaker panel ground bus bar which, in turn, should be grounded to a ground rod. A conduit ground does not provide a sufficient ground. It is recommended that the neutral and ground bus bars be bonded together when it is not prohibited by local codes.



The universal ground symbol identifies the grounding terminal located in the upper chamber, near terminal blocks.



**WARNING:** Ground wire must be connected to the ground lug. Failure to properly ground the unit could result in unit failure and/or bodily injury.

**IMPORTANT:** Improper grounding will void equipment warranty.

## Wire Gauge and Conduit Size

When planning the orientation of the wiring runs, follow the applicable ICS wiring diagrams and consider the layout of the components at the site.

To determine conduit size needed, see the Table 2:

	½	¾	1	1 ¼	1 ½	2	2 ½	3
AWG 14	13	24	39	69	94	154	—	—
AWG 12	10	18	29	51	70	114	164	—
AWG 10	6	11	18	32	44	73	104	160
AWG 8	3	5	9	16	22	36	51	79
AWG 6	1	2	6	11	15	26	37	57
AWG 4	1	1	4	7	9	16	22	35
AWG 3	1	1	3	6	8	13	19	29
AWG 2	1	1	3	5	7	11	16	25
AWG 1	1	1	1	3	5	8	12	18

**Table 2: Max. Number of Wires (THHN) in a Given Conduit Size**

# Auto Sentry® Petro In-bay Layout

## AUTO SENTRY® PETRO IN-BAY LAYOUT

\*\*\* THIS DRAWING IS ONLY INTENDED TO SHOW THE GENERAL LAYOUT AND DIMENSIONS NECESSARY FOR THE PROPER PLACEMENT OF THE AUTO SENTRY PETRO. ANY DEVIATION MAY CAUSE DAMAGE TO THE AUTO SENTRY PETRO. \*\*\*

**NOTE:** ICS DOES NOT RECOMMEND AN IDEAL DISTANCE BETWEEN THE AUTO SENTRY PETRO AND THE ENTRANCE TO THE IN-BAY TUNNEL, BUT DOES OFFER THE FOLLOWING INFORMATION TO THE IN-BAY OWNER FOR THEM TO DECIDE WHAT THE APPROPRIATE DISTANCE SHOULD BE FOR THEIR SITE:

1. **THE TYPE OF IN-BAY AUTOMATIC:** EACH IN-BAY AUTOMATIC IS DIFFERENT AND THEY ALL EXPEL DIFFERENT AMOUNTS OF BOTH WATER AND CHEMICALS, WHICH IF BLOWN ONTO THE AUTO SENTRY PETRO IN ANY GREAT AMOUNT COULD IMPEDE THE USERS ABILITY TO SEE AND/OR PROPERLY UTILIZE THE TOUCH SCREEN.

2. **THE RELATIVE WIND DIRECTION:** IF THE PREVAILING WIND BLOWS FROM THE AUTO SENTRY PETRO TO THE BAY ENTRANCE, THEN THERE SHOULD BE ONLY MINOR PROBLEMS FROM BLOW-BACK. IF THE PREVAILING WIND BLOWS THROUGH THE BAY TOWARDS THE AUTO SENTRY PETRO THEN THE AUTO SENTRY PETRO WILL BE GREATLY AFFECTED. IF THE PREVAILING WIND IS PERPENDICULAR TO THE TUNNEL THERE WILL AGAIN BE MINOR PROBLEMS.

3. **DRYER TYPE:** THE TYPE OF DRYER USED IN THE WASH WILL ALSO BE A FACTOR. DRYERS THAT SIMPLY BLOW DOWN THE TUNNEL TOWARDS THE AUTO SENTRY PETRO WILL FACILITATE THE BUILDUP OF WATER AND CHEMICALS ON THE AUTO SENTRY PETRO EVEN ON WINDLESS DAYS.

4. **BAY DOORS:** IF BAY DOORS ARE INSTALLED AND CLOSE BETWEEN VEHICLES, THEN THERE SHOULD NOT BE ANY PROBLEMS AT ALL AND THE AUTO SENTRY PETRO CAN BE PLACED AS CLOSE TO THE ENTRANCE AS POSSIBLE WHILE ALLOWING A SECOND VEHICLE TO PULL UP TO THE AUTO SENTRY PETRO WITH ENOUGH ROOM FOR THE CUSTOMER TO OPERATE IT WHILE THE FIRST CAR IS IN THE TUNNEL (MINIMALLY THIS DISTANCE IS TWELVE FEET FROM THE CENTER OF THE AUTO SENTRY PETRO TO THE NEAREST OBSTRUCTION).

ALL OF THE ABOVE FACTORS MUST BE TAKEN INTO CONSIDERATION WHEN DETERMINING THE BEST LOCATION FOR THE AUTO SENTRY PETRO IN RELATION TO THE ENTRANCE OF THE WASH BAY. AS A GENERAL RULE, THE FURTHER AWAY THE AUTO SENTRY PETRO IS FROM THE BAY ENTRANCE, THE BETTER OFF IT WILL BE.

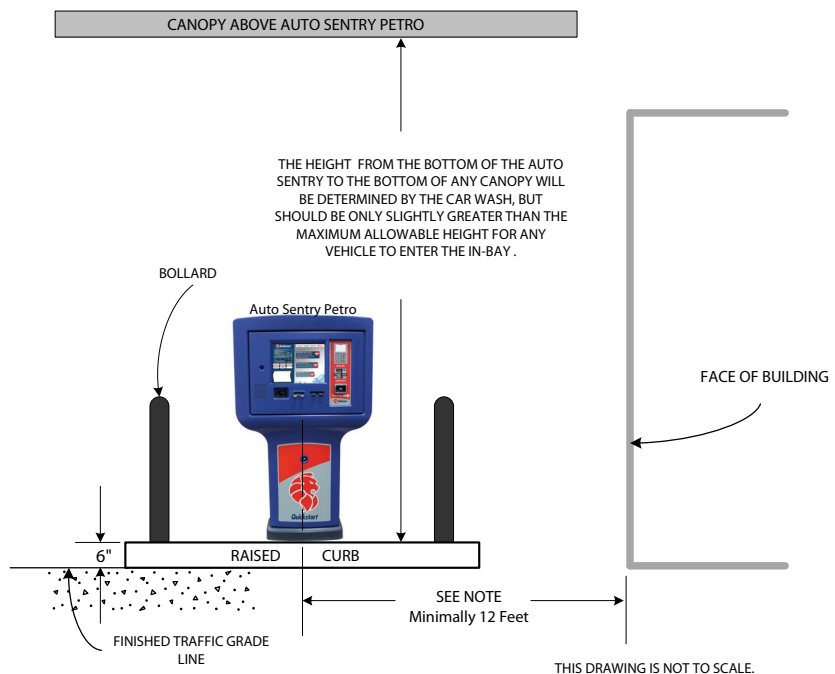


Figure 1. Auto Sentry® Petro In-bay Layout

## Auto Sentry® Petro Placement Front and Side View

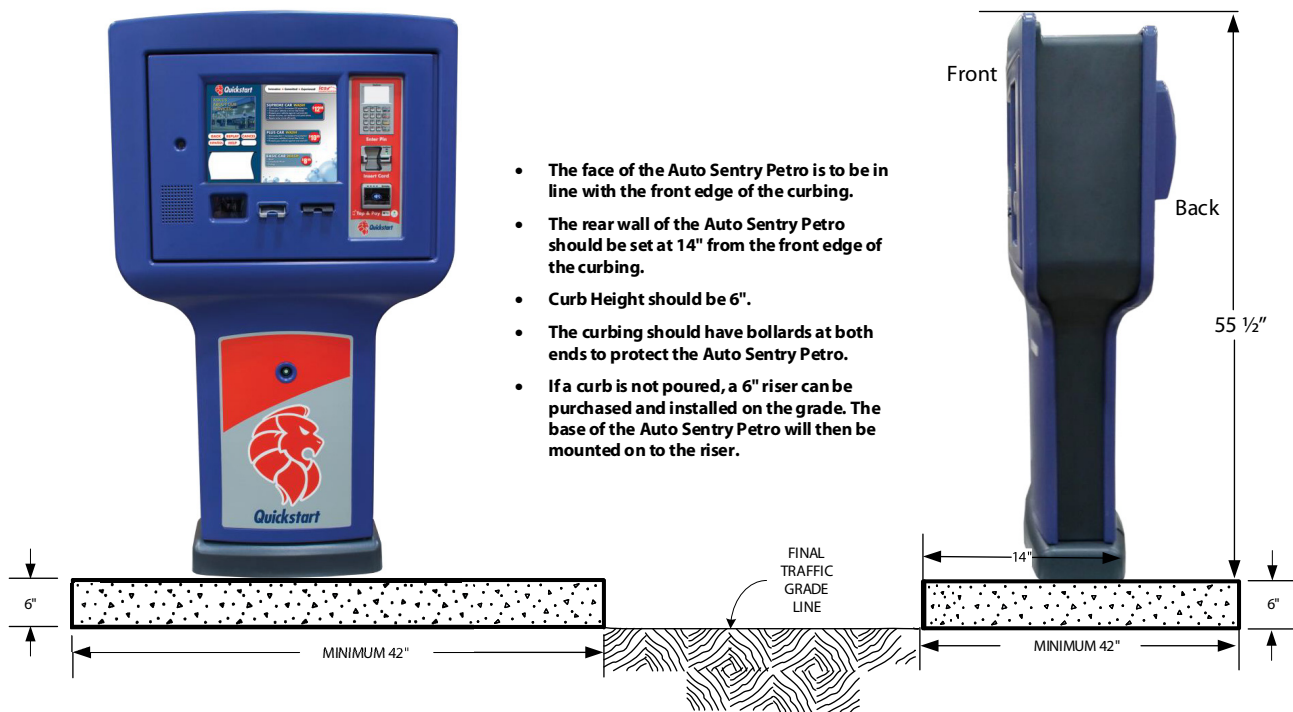


Figure 2. Auto Sentry® Petro Placement Front and Side View

# Auto Sentry® Petro Dimensions

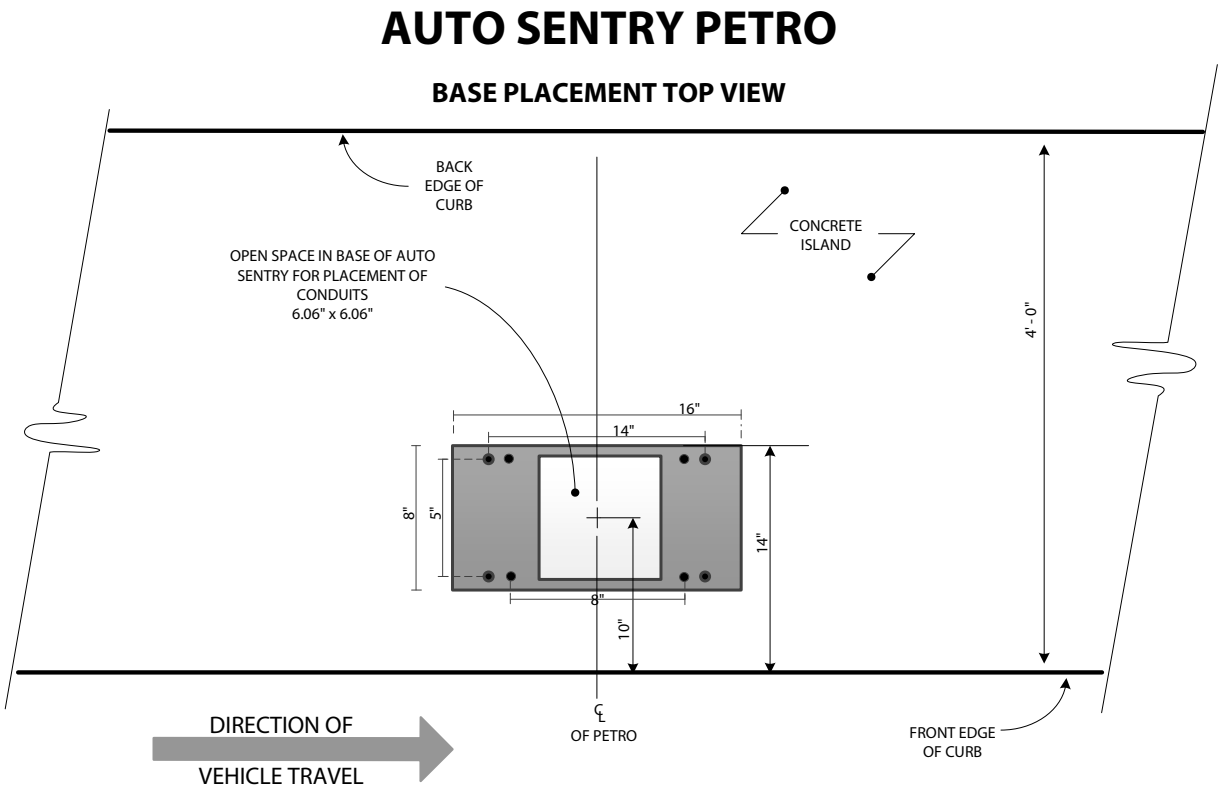


The Auto Sentry® Petro is the primary point-of-sale for the car wash. It is installed outside near the entrance of the car wash with a canopy placed over it.

**NOTE:** Any curbing and raiser must be added to these measurements.

Figure 3. Auto Sentry® Petro Dimensions

# Auto Sentry® Petro Placement Top View



**Figure 4. Auto Sentry® Petro Placement - Top View**

## CHAPTER 2: Molded Plastic Installation

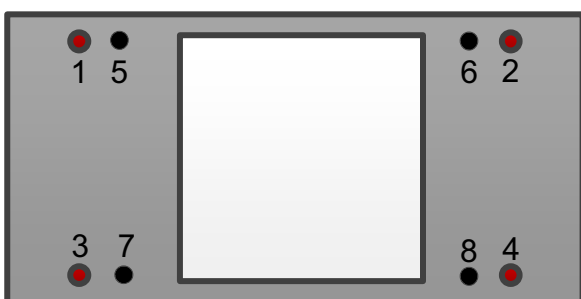
The Auto Sentry® Petro is designed to be rugged from the inside out. The heart of this design is a solid stainless steel metal cabinet with full air conditioning. The durable roto molded plastic surrounds and protects the metal cabinet core and gives the Auto Sentry® Petro a fresh new style. Brand vinyl with your logo and graphics to make the Auto Sentry® Petro your own.

After the J bolts have been set in the concrete according to your site plan, the installation of your Auto Sentry® Petro can begin.

### Attaching the Auto Sentry® Petro to the J Bolts

If your site does not have a raised curb, contact ICS to order a riser to place your Auto Sentry® Petro upon. The riser gives the Auto Sentry® Petro the proper height that is necessary to deliver to your customers who are inside their vehicles the most ergonomic, easy to reach experience at the Auto Sentry® Petro payment terminal. Before you go any further, there needs to be (4) or (8) J bolts set in concrete according to your site's layout. The first four J bolts are standard, see Figure 5. If available, the extra four J bolts simply provide added security but are not necessary.

**Items Needed** (site provided): 3/8" J bolts, nuts, and washers to attach the base.



**Figure 5. J bolts in base of Auto Sentry® Petro**

1. Run the power cable and two Cat 6 cables (the 2nd Cat 6 cable is for EMV only) to the Auto Sentry® Petro and pull up them up through the center of the Auto Sentry® Petro's pedestal.
2. As you line up the J bolts to the holes in the base of the Auto Sentry® Petro, place the Auto Sentry® Petro on top of the concrete.
3. Tighten (4) or (8) nuts and (4) or (8) washers to the J bolts.

**NOTE:** If using (4) J bolts in your concrete, attach #1-4 (Figure 5). Using 8 bolts is optional. If using (8) J bolts in your concrete, attach #1-8 (Figure 5).

# Roto Molded Plastic Installation

After the Auto Sentry® Petro is secured to the concrete with the J bolts, the next step is to attach the five Roto Molded Plastic pieces to the metal core of the Auto Sentry® Petro using the hardware in the following labeled plastic bags:

**Bag A** (6) 1/4" - 20 x 1- 1/2" cap screws and **Bag H** (6) 1/4" washers

**Bag B** (4) 1/4" - 20 x 1- 1/2" oval screws

**Bag C** (3) #10 - 1-1/2" screws with (3) #8 washers

**Bag D & I** (21) #8 - 11 x 1- 1/4" screws with (21) #8 flat washers

**Bag E** (8) 1/4" - 20 x 3/8" bolts

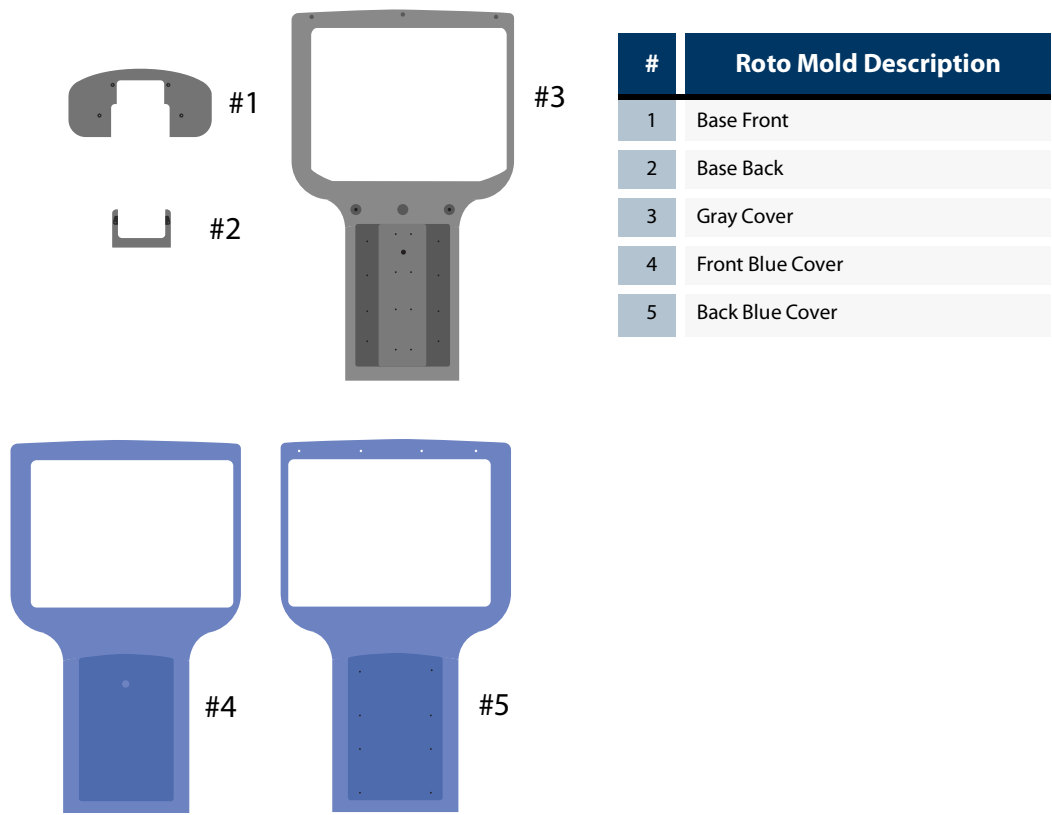
**Bag F** (8) #10 - 32 x 1/2" machine screws (no washers)

**Bag J** (8) #10 - 32 x 1" Screws (no washers)

**Bag K** (19) #6 Keps Nuts

**Bag M** (1) #6 - 32 x 3/8" Machine Screws

**Bag N** (20) Rubber Washers



**Figure 6. Roto Molded Plastic Pieces**

**NOTE:** If there is no sidewalk, a 6" metal riser is required to raise the Auto Sentry® Petro to optimal ergonomic height. (Figure 14 demonstrates the 6" riser.)

1. Lift up the base of the Auto Sentry Petro and place over the U-bolts.



**Figure 7. (6) holes in metal base line up with plastic**

There are two small Roto Molded gray plastic pieces #1 and #2 that fit together to cover the base of the metal pedestal.

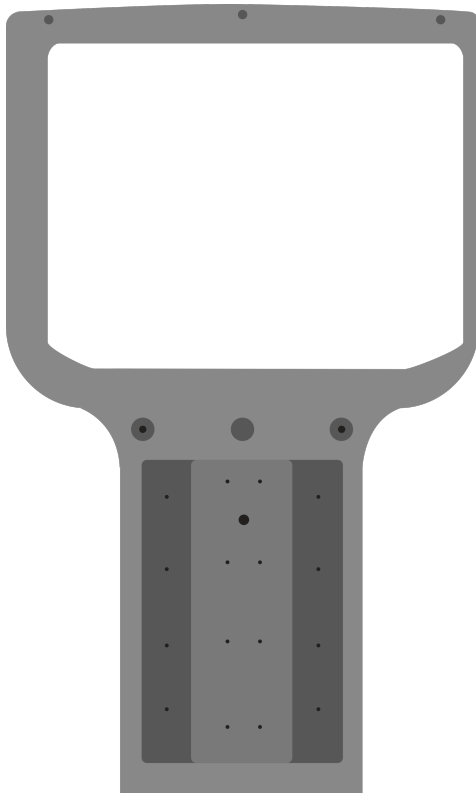


**Figure 8. Base Roto Molded Plastic pieces**

2. Place roto-mold #1 on the front of the base and place roto-molded plastic #2 on rear of the base.
3. Line up the holes in the roto molded plastic cover pieces with the holes in the Metal base. See Figure 7.
4. Insert (2) 1/4" 20 x 1- 1/2" cap screws with 1/4" flat washers. (Bag A / Bag H)
5. Use a 3/16" hex key tool to tighten the screws snugly and attach roto mold #1 and #2. See Figure 8.

**NOTE:** DO NOT OVER TIGHTEN. Two pound-foot torque is recommended. Over torquing could cause shearing or cracking.

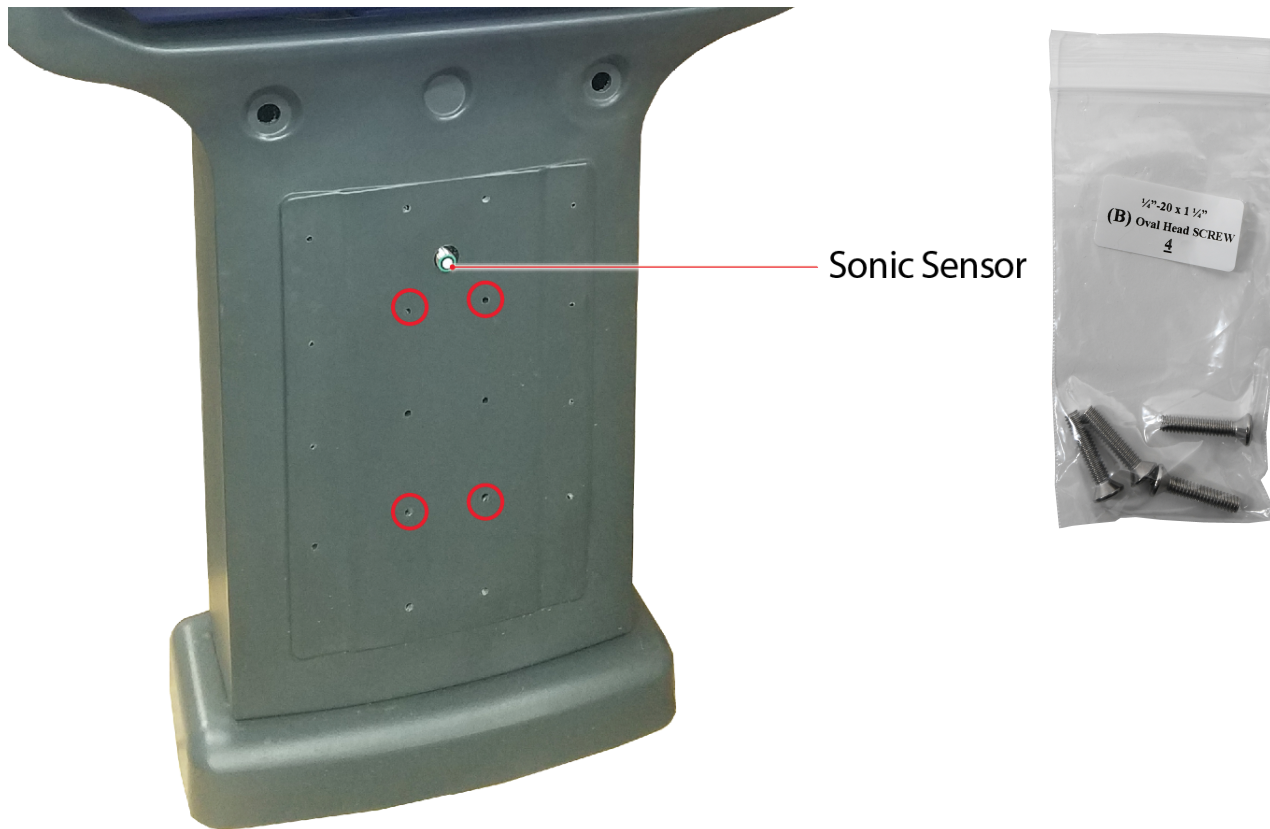
6. Locate the gray full-size Auto Sentry® Petro roto mold #3. See Figure 9.



**Figure 9. Roto Mold Plastic #3 (Front view)**

7. On the Auto Sentry® Petro, open the front door to perform the next step.
8. Remove the plastic keeper on the sonic sensor. You will need to put this back on after the plastics are completely installed.
9. Place the Roto Molded Plastic #3 over the Auto Sentry® Petro metal core.

**10.** Use a #2 Phillips screwdriver and install (4)  $\frac{1}{4}" \times 20 \times 1 - \frac{1}{2}"$  oval screws (Bag B). There are 10 holes but you only need to use four of the 10, preferably below the sonic sensor. See Figure 10.



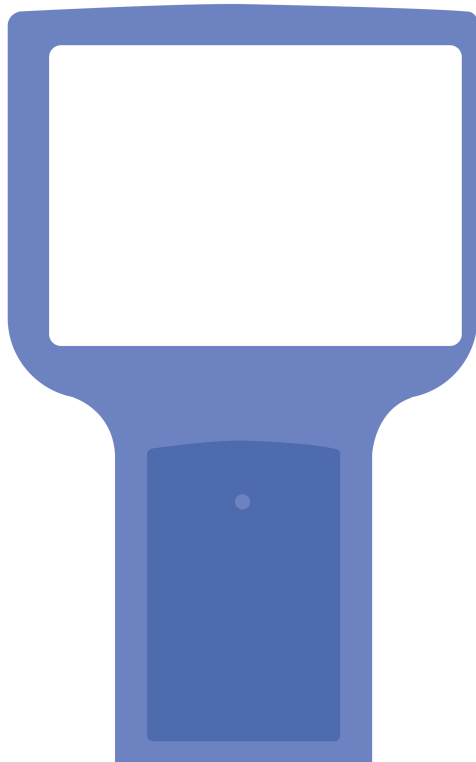
**Figure 10. Oval Screws in plastic pedestal below Sonic Sensor**

- 11.** On the back of the Auto Sentry® Petro, line up the three metal tabs at the top to the holes in the gray roto mold #3. See Figure 11.



**Figure 11. Three metal tabs on backside of the Auto Sentry® Petro**

- 12.** Install (3) of the #8 -11 x 1-1/4" and (3) of the #8 Flat Washers from (Bag D & I) across the top on the back of the Auto Sentry® Petro. See Figure 11.
- 13.** Open front door of the Auto Sentry® Petro.
- 14.** Locate the blue roto mold #4 and then place it on the front of the gray roto mold #3. See Figure 12.

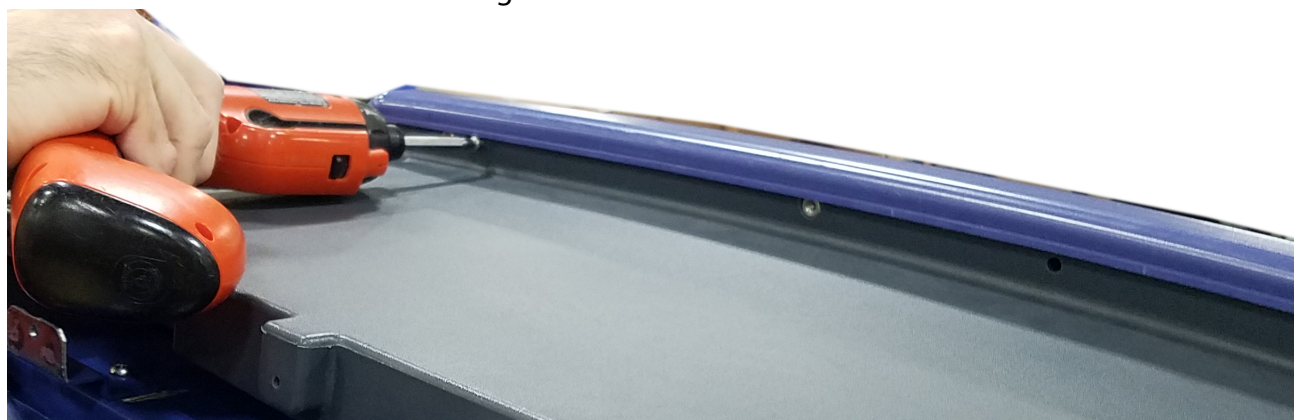


**Figure 12. Blue Roto Mold #4 (front)**

- 15.** At the top of the blue and gray molds, you can line up the screw holes. See Figure 13.

**NOTE:** The (4) silver screw holes across the top of Roto Mold #4 are for optional sign attachment. Contact ICS Marketing for custom toppers for an additional fee.

- 16.** Install and tighten (3) #10 x 1- 1/2" screws with #8 flat washers (Bag C) across the top of the blue roto mold front cover. See Figure 13.



**Figure 13. Attach Blue Roto Mold #4 with 3 screws to gray Roto Mold #3**

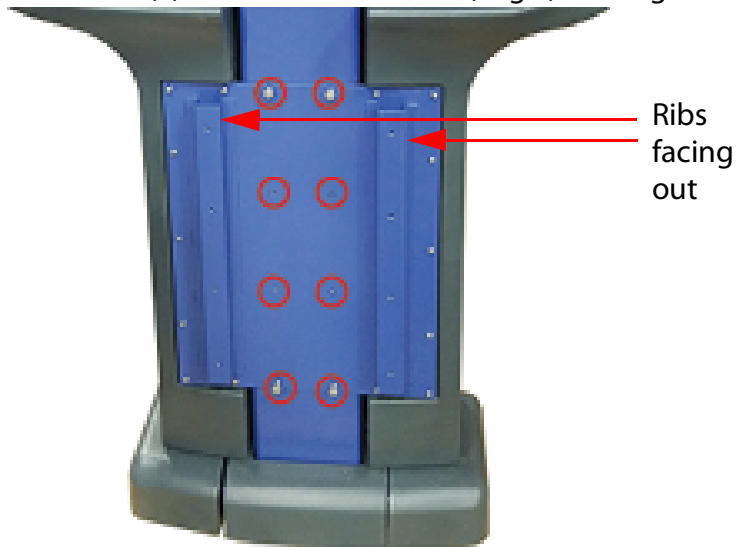
- 17.** In the holes that are set deep inside the back of the Auto Sentry® Petro pedestal, install (8) #10 - 32 x 1" screws with #8 washers (Bag J). See Figure 14.

**DO NOT OVER TIGHTEN. Five pound-foot torque is recommended. Over torquing could cause shearing or cracking.**



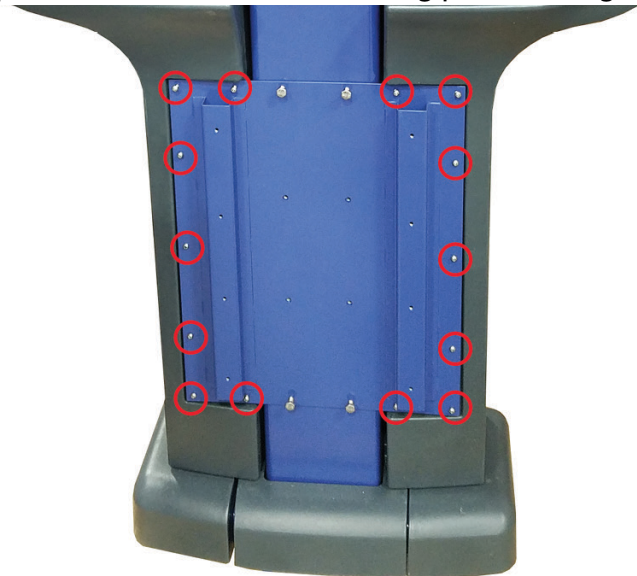
**Figure 14. Back of the Auto Sentry® Petro, tighten 8 screws**

- 18.** Attach the metal mounting plate with the ribs facing out to the back of the Auto Sentry® Petro pedestal with (8) 1/4" x 20 x 3/8" bolts (Bag E). See Figure 15.



**Figure 15. Attach Metal Mounting Plate with 8 Bolts**

**19.** Install and tighten (14) #8 x 11 x 1- 1/4" screws and flat washers (Bag D & I) around the perimeter of the metal mounting plate. See Figure 16.



**Figure 16. Attach 14 Screws in the perimeter of the metal plate**

**20.** Place the blue roto mold #5 on the back of the Auto Sentry® Petro.



**Figure 17. Roto Mold #5 for the Auto Sentry® Petro (Back Piece)**

**DO NOT OVER TIGHTEN for steps #20 and #21. Five pound-foot torque is recommended. Over torquing could cause shearing or cracking.**

- 21.** Install and tighten (4) #8-11 X 1-1/4" (Bag D & I) across the top of the backside of Roto Mold #5. See Figure 17.
- 22.** Install and tighten (8) #10-32 x 1/2" (Bag F) (no washers) in the pedestal of the Roto Mold #5. See Figure 17.  
You have now finished installing the roto plastic molding on the Auto Sentry® Petro.

# CHAPTER 3: System Wiring

The Auto Sentry® Petro's main power input is wired to the terminal block which is located inside the top of the Auto Sentry® Petro, along with the heat exchanger.



*All wiring must follow the recommended "Auto Sentry® Petro Power Requirements" on page 5*



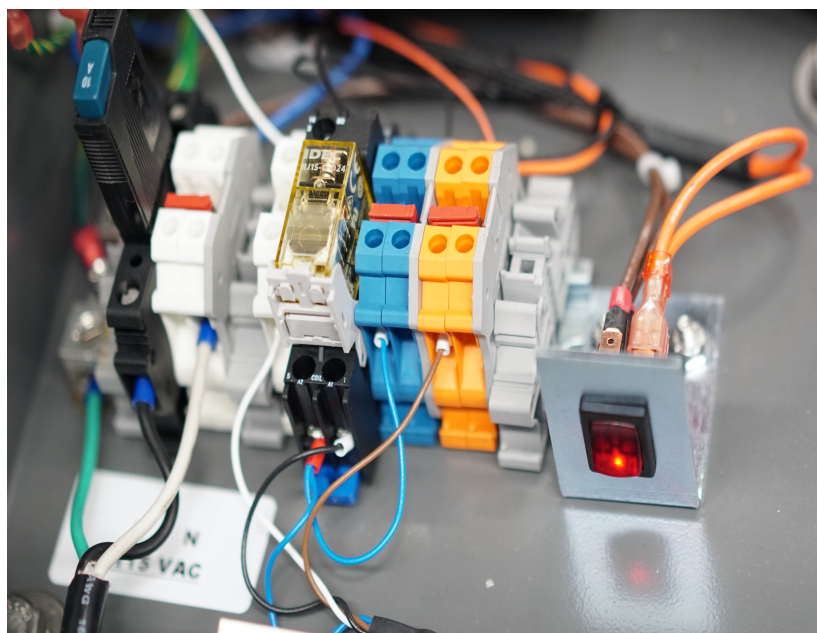
See "Recommended and Accepted Grounding Methods" on page 7.

## Warning Symbol

The Warning Symbol symbol (in this manual, on equipment, or hardware) indicates you should consult accompanying documentation before proceeding. The warning symbol is below:



**WARNING:** The terminals and power supplies contained in the Auto Sentry® Petro enclosure are for the ICS Equipment Only! Connecting external components and wiring to the Auto Sentry® Petro power circuits can damage the circuit boards and components and WILL VOID THE WARRANTY.



**Figure 18. Power Terminal blocks inside the Auto Sentry® Petro**

## Auto Sentry® Petro AC Power Terminations

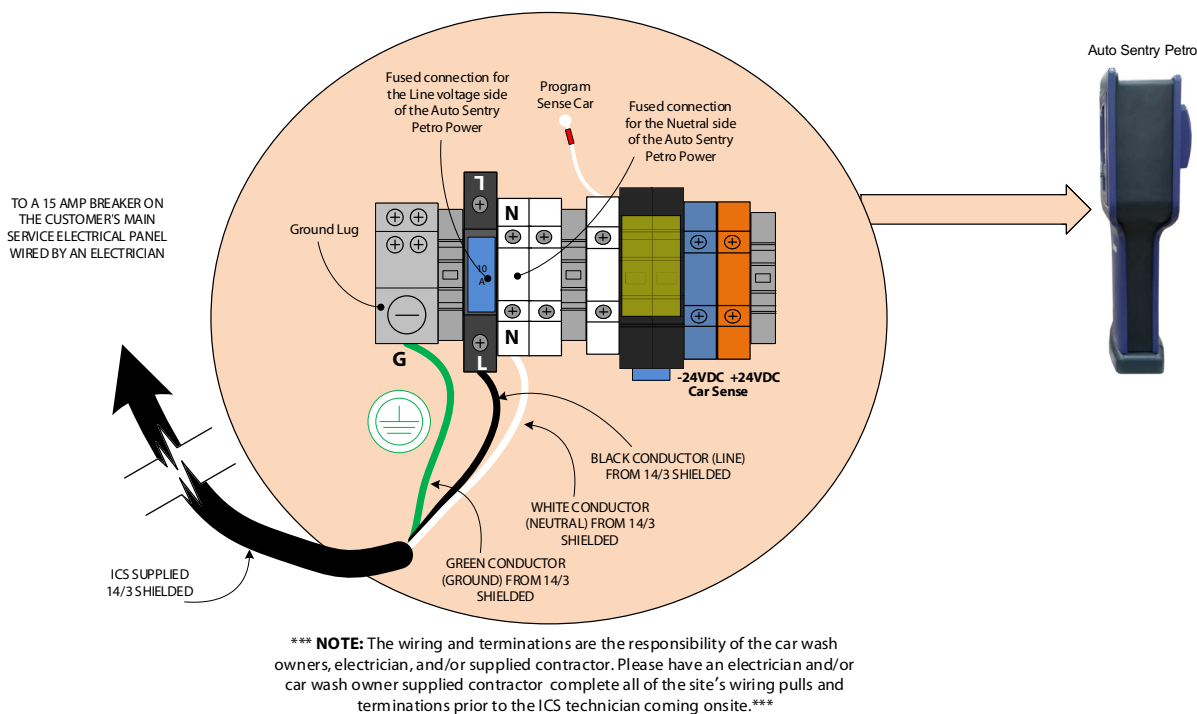


Figure 19. AC Power Terminations and Program Sense Car

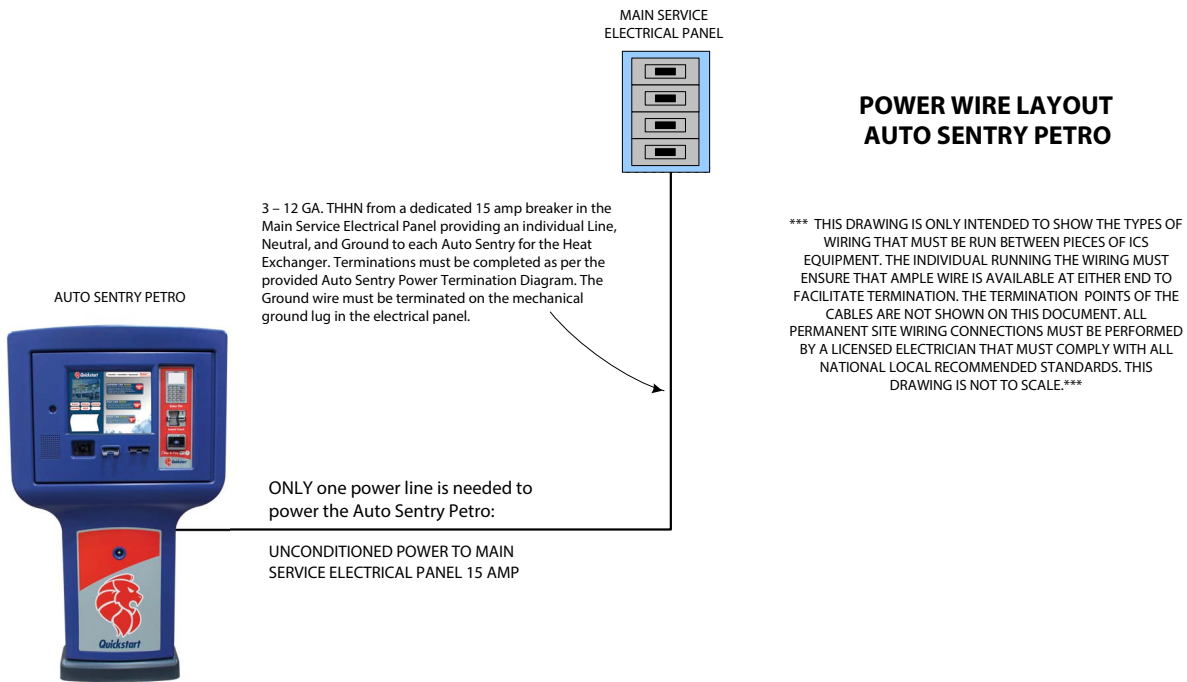
## Programming Sonic Sensor for Sense Car

**NOTE:** THIS PROGRAMMING GUIDE IS FOR THE ROUND WHITE/GREEN SONIC SENSOR NOT THE ORANGE SENSOR.

- 1) Put something in front of the sensor the same distance away from the Auto Sentry Petro where a car would normally be when parked at the payment terminal. (A metal sign works best or something similar).
- 2) With the object in place, touch the white programming wire to the +24 orange terminal block, and the sensor flashes yellow. Hold until it flashes red, and then hold for a few more seconds.
- 3) Move the wire off of the +24 orange terminal block.
- 4) Move the object away from the area.
- 5) Touch the white programming wire to the -24 blue terminal block.
- 6) Sensor should flash red.
- 7) Move the wire off of the -24 blue terminal block.
- 8) Test the sensor, you should see the sense car on the PIO/SIO board light up.

If no signal, you can remove 3P9 cable and jump pins 3 and 4 on the board and check car sense light.

# Power Wiring Layout



## IMPORTANT:

Run only one power line to the Auto Sentry Petro.

**Figure 20. Power Wiring Layout**

# Control Box Terminations

This feature is optional. WashConnect software has the ability to toggle the Auto Sentry® Petro Wash Open on the server /POS computer screen.

Override switches for the gates are still necessary.

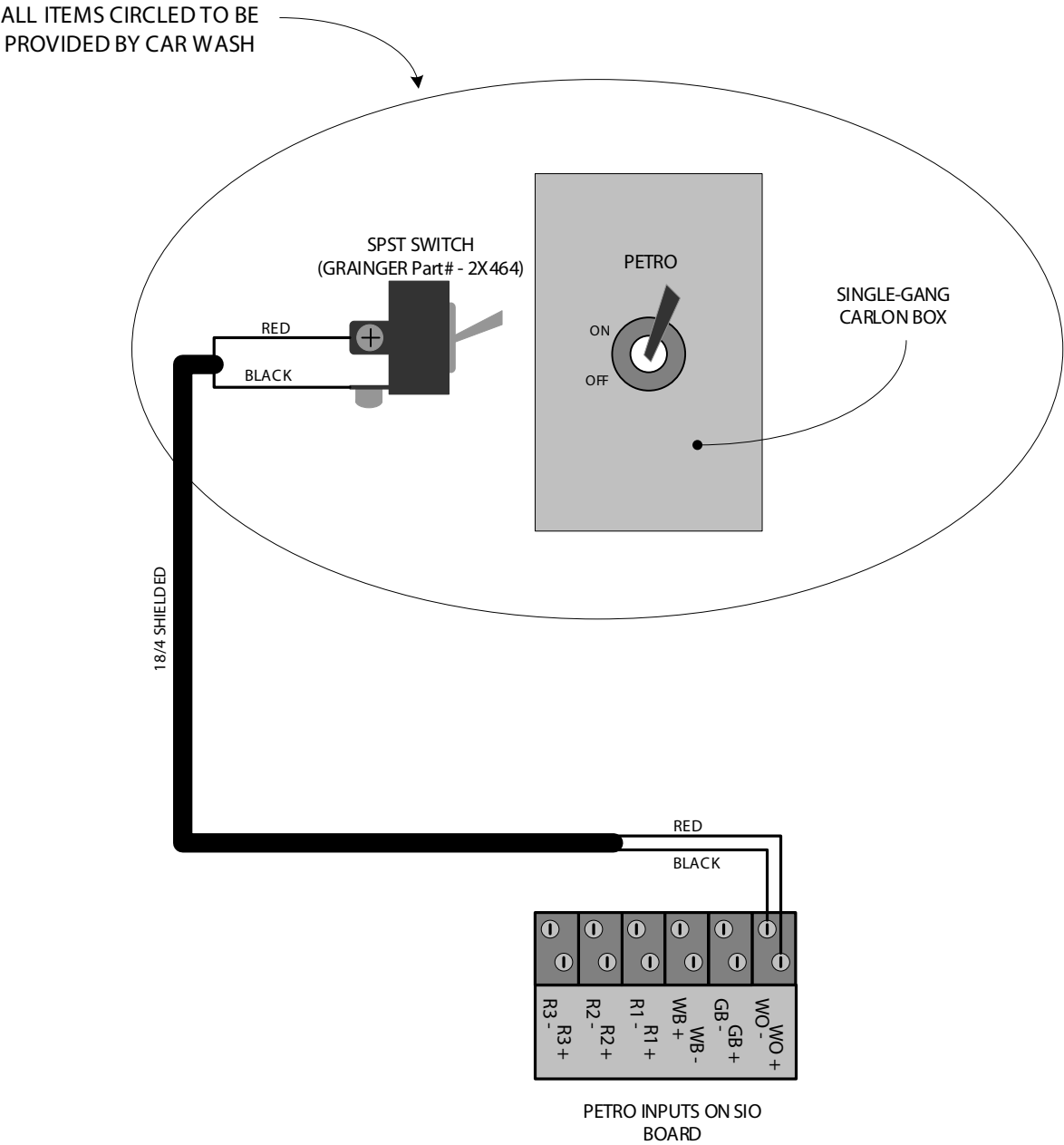
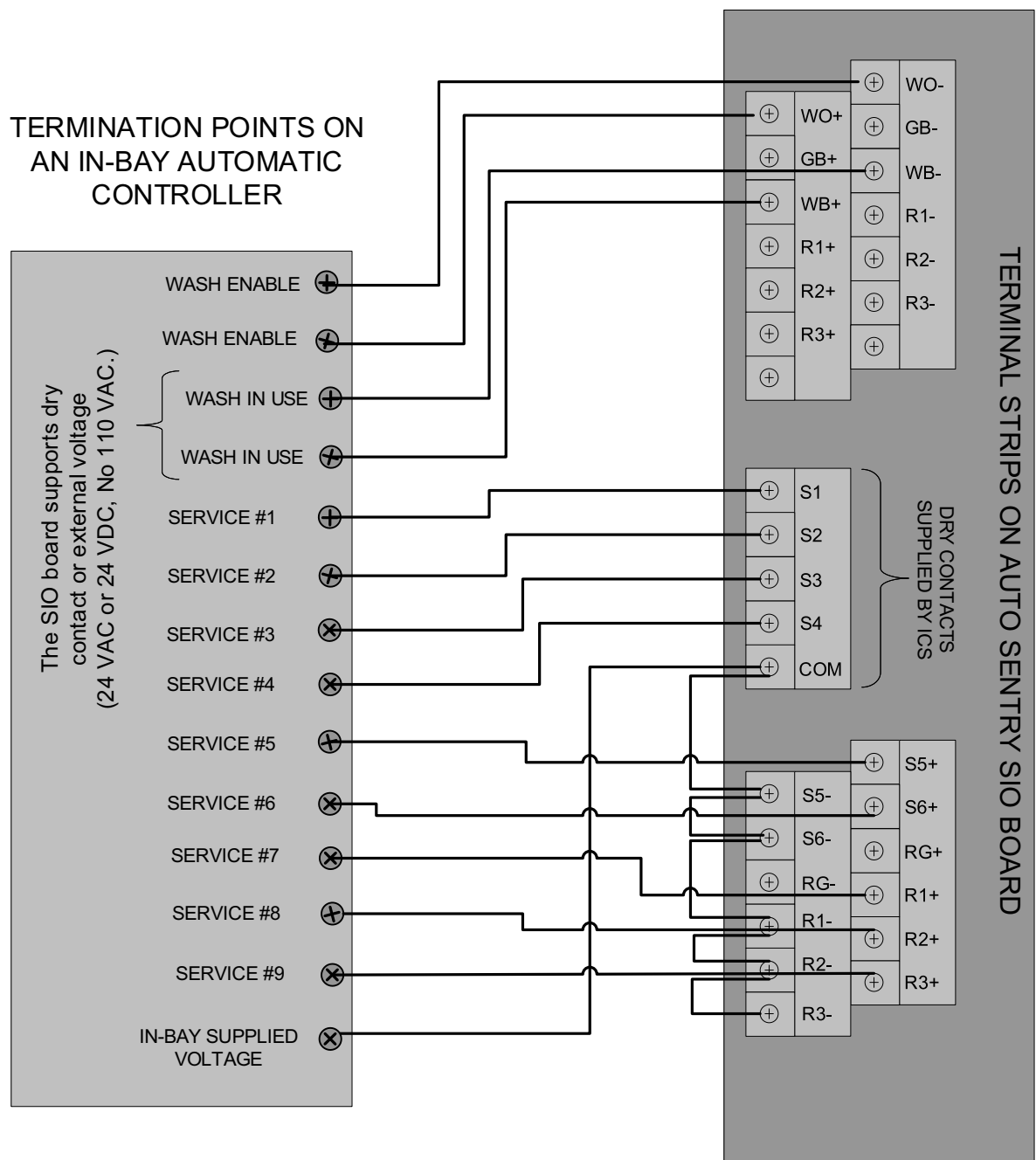


Figure 21. Auto Sentry® Petro Control Box Terminations

# In-Bay Controller Wire Terminations



Terminology varies. For example, Wash Busy can also be called “wash in use” or “wash inhibit”.

NOTE: The SIO board supports up to 9 direct wash outputs but also supports several binary protocols for more functions if needed.

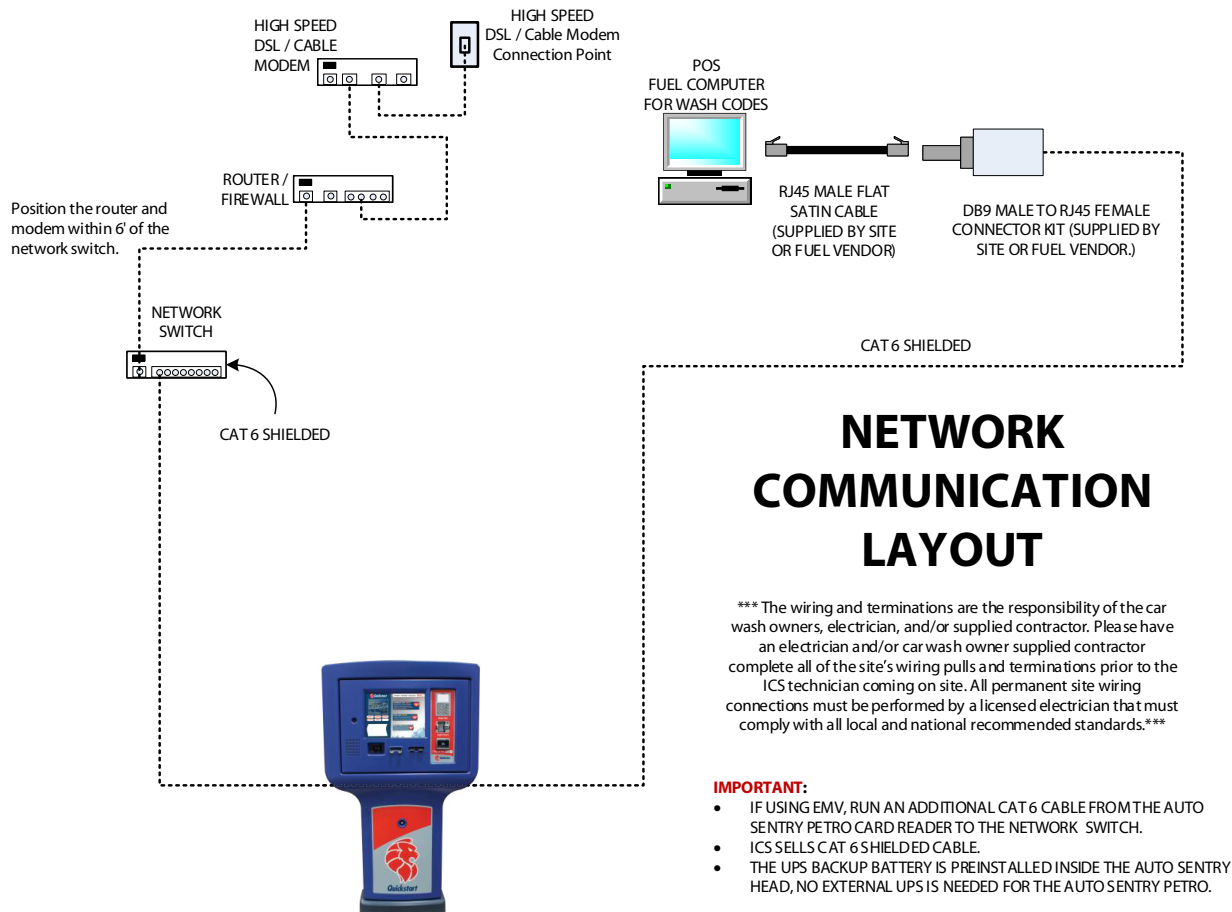
**Figure 22. In-Bay Controller Wire Terminations**

## In-Bay Wiring Layouts

Figure 23 is an example of a possible Network Communication Layout for an In-Bay Car Wash. See the ICS System Installation Drawings that were prepared for your specific car wash site and given to you by your ICS salesperson or technician.

## Network Communication Layout

The wiring schedule for the Power Layout is found on page 26.



**Figure 23. Network Communication Layout**

# CHAPTER 4: Communications Wiring

This section describes wiring for RS-422 and RS-485 communications.

## Installation Requirements

- All peripheral equipment connected to the RS-232 ports must be Listed, have an Electronics Industrial Association (EIA) standard RS-232 comm communications protocol and not be installed over a hazardous location.
- RS-232 communication must not exceed 100 feet.
- Communications equipment signal wires must also be run in separate rigid PVC or metal conduit, separate from any power conduits.
- Network Terminations.

### Ethernet Networking

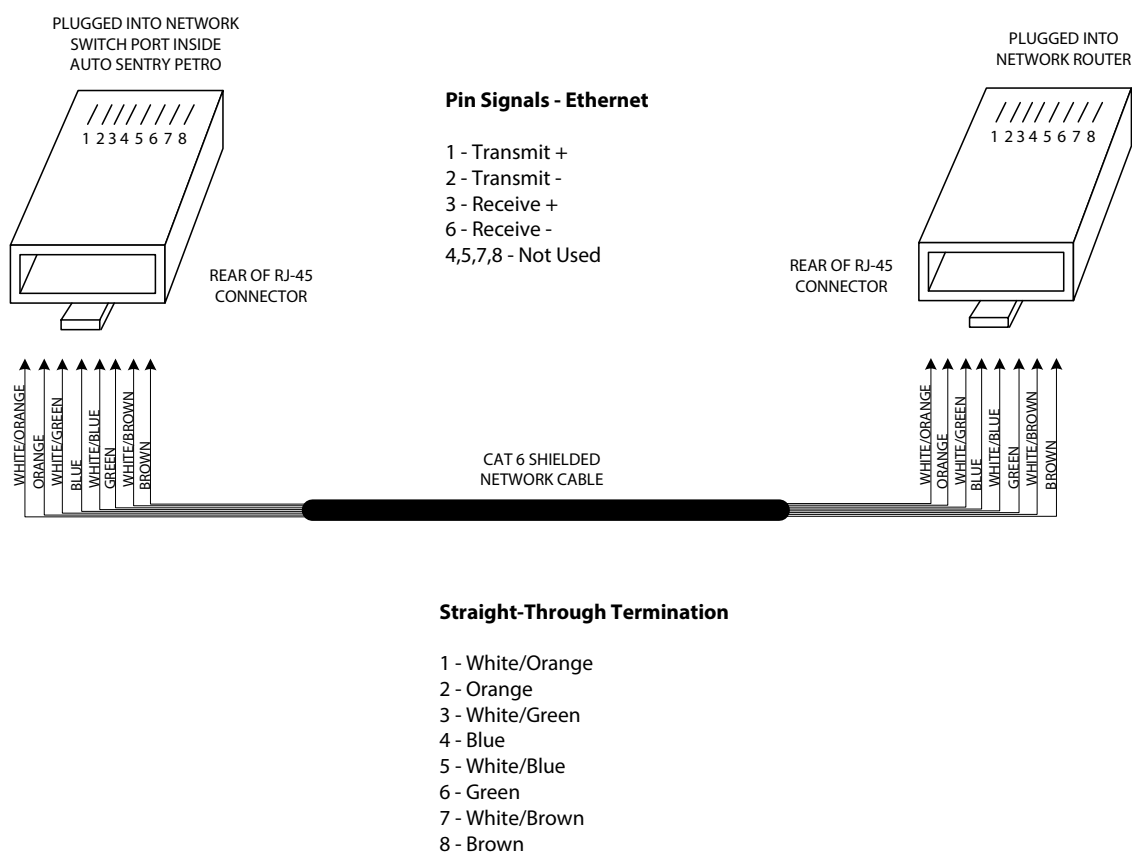
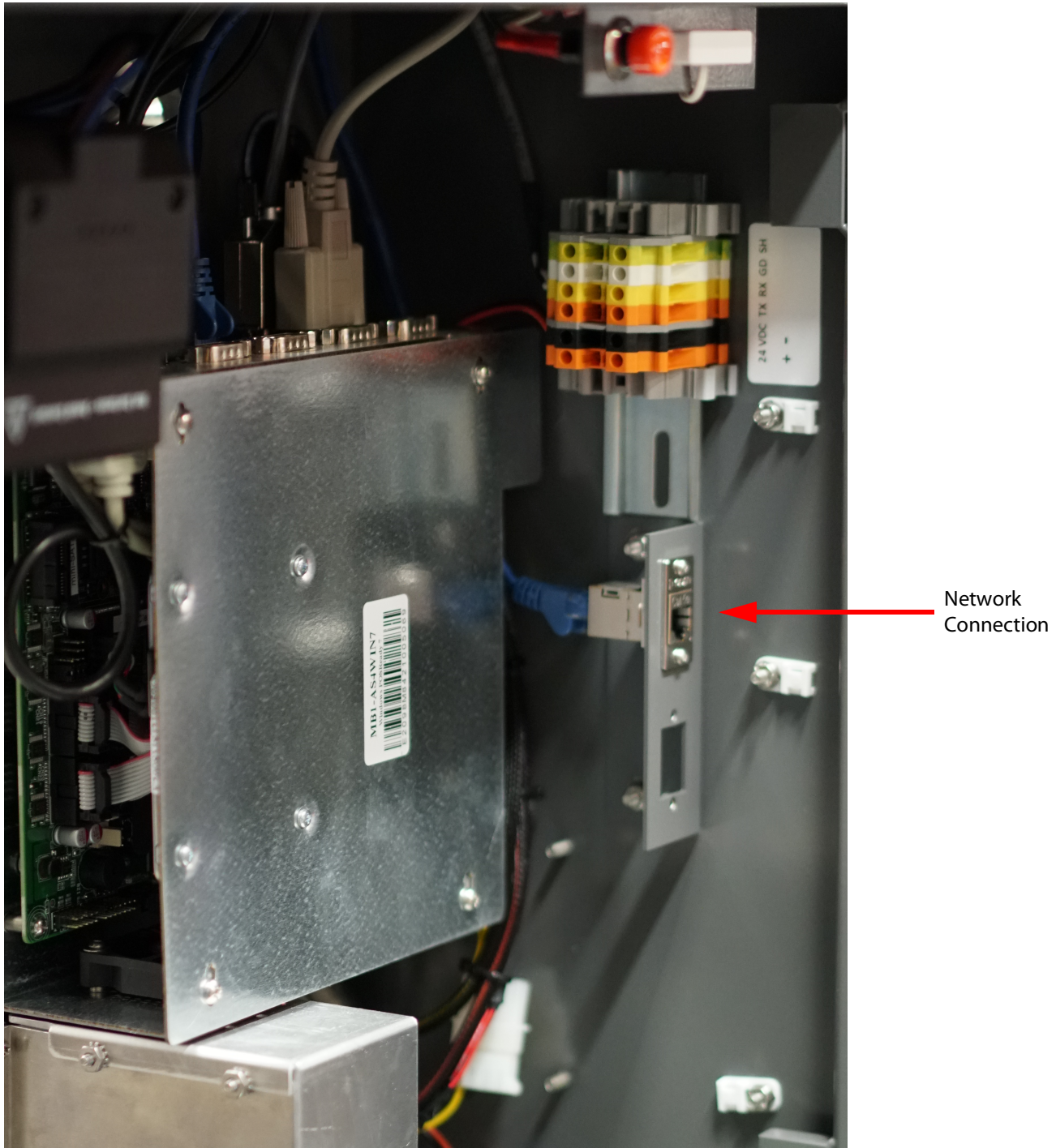


Figure 24. stand-alone Auto Sentry Network Terminations

## System Network Cables



**Figure 25. Network Connection inside the stand-alone Auto Sentry Petro**

- 1 From the network router, pull a network cable up through the center of the Auto Sentry® Petro unit and plug it into the port on the network bracket located inside the stand-alone Auto Sentry.
- 2 In some instances when needed, a switch is installed. This is to accommodate situations needed for customer and overseas outside the continental U.S.

# CHAPTER 5: Parts Identification

This section provides details on exterior and interior component locations and part numbers.

The Auto Sentry® Petro also includes roto plastic panels to fit the exterior of the unit. Panels may be purchased separately.

If you have a 6" sidewalk above finished grade, you do not need the 6" riser. If there is no sidewalk that rises above the finished grade to install the Auto Sentry Petro upon, the 6" riser is necessary to provide optimal touch screen ergonomics. In Figure See Figure 26., the metal riser is displayed.

**NOTE:** If you cannot find the part in the following diagrams, contact ICS sales for more information: 1-800-642-9396. Both exterior and interior components, wires, accessories, and more are available for purchase or reorder.

## Exterior Components (Front View)



**Figure 26. Exterior Components (Front View)**

**Table 3: Exterior Components (Front View)**

#	ICS Part Number	Description
1	AS2TOUCH15Z2	15" touch screen
2	CAMERA	Camera
3	AS2INTERCOMSP	2 Speakers
4	SCN-000002-00	Bar code Reader
5	AS4CARDCHUTE	Gift card dispenser chute for the Auto Sentry Petro
6	SENSOR-18MML	Replacement Sensor only
7		PIN pad per site specifics
8		Card reader assembly per site specifics
9		Contactless reader per site specifics
10	ASPRHEC	USB printer

# Power Terminal Blocks

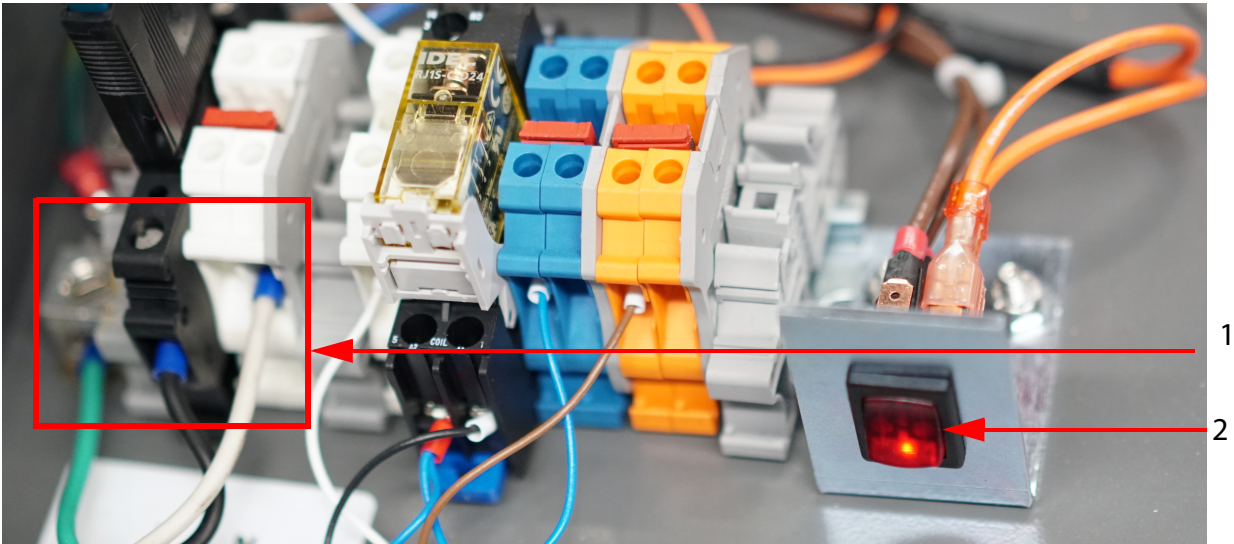
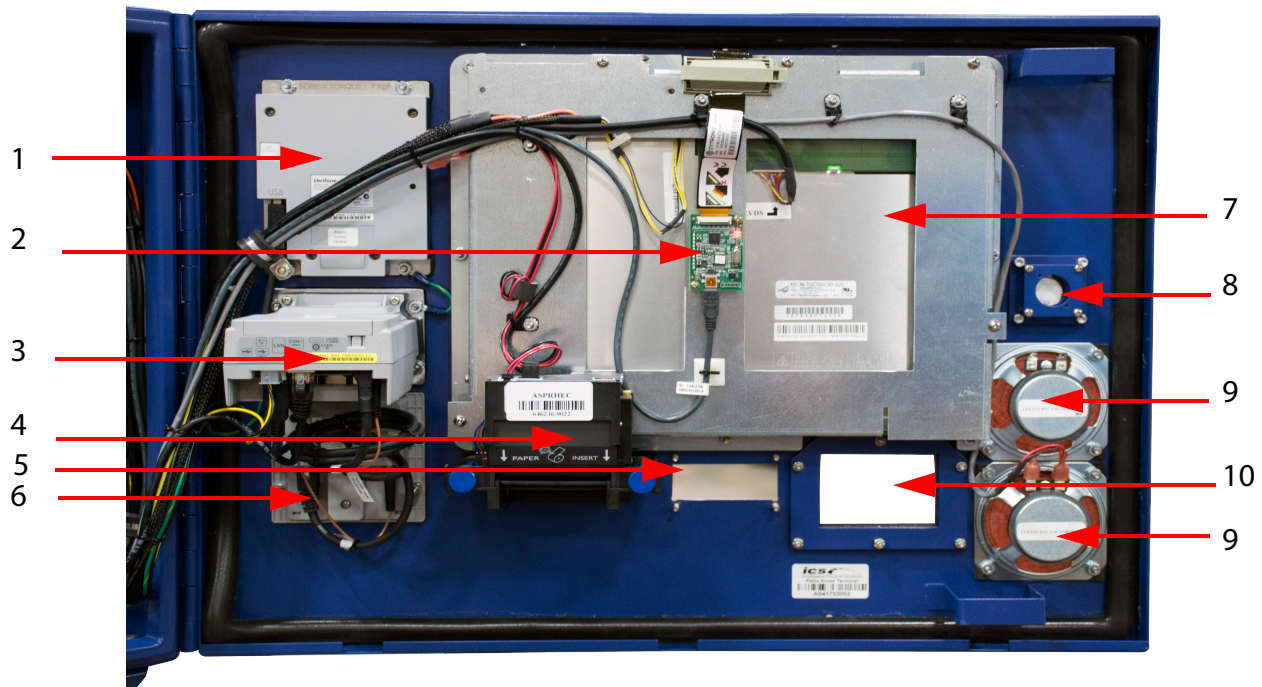


Figure 27. Power Terminal Blocks

#	ICS Part Number	Description
1		Power terminal blocks inside the Auto Sentry Petro
2	AS4PWRSWITCH	Power switch, illuminated

## Interior Front Door Components

This view is looking at the inside of the front door (with the display on the it).



**Figure 28. Interior Front Door Components**

**Table 4: Interior Front Door Components**

#	ICS Part Number	Description
1		PIN Pad per site specifics
2	AS2TOUCH15ZCNCD	Touch Controller Card
3		Card reader assembly per site specifics
4	ASPRHEC	USB Receipt Printer
5	AS4CARDCHUTE AS3CARDDISP	Gift Card Chute Card Dispenser
6		Contactless reader per site specifics
7	DISP15ON2	Display
8	CAMERA	Camera
9	AS2INTERCOMSP	2 Speakers for the Auto Sentry Petro
10	SCANNERCOV	Window protector for Bar code Reader

# Interior rear left-side of Auto Sentry® Petro

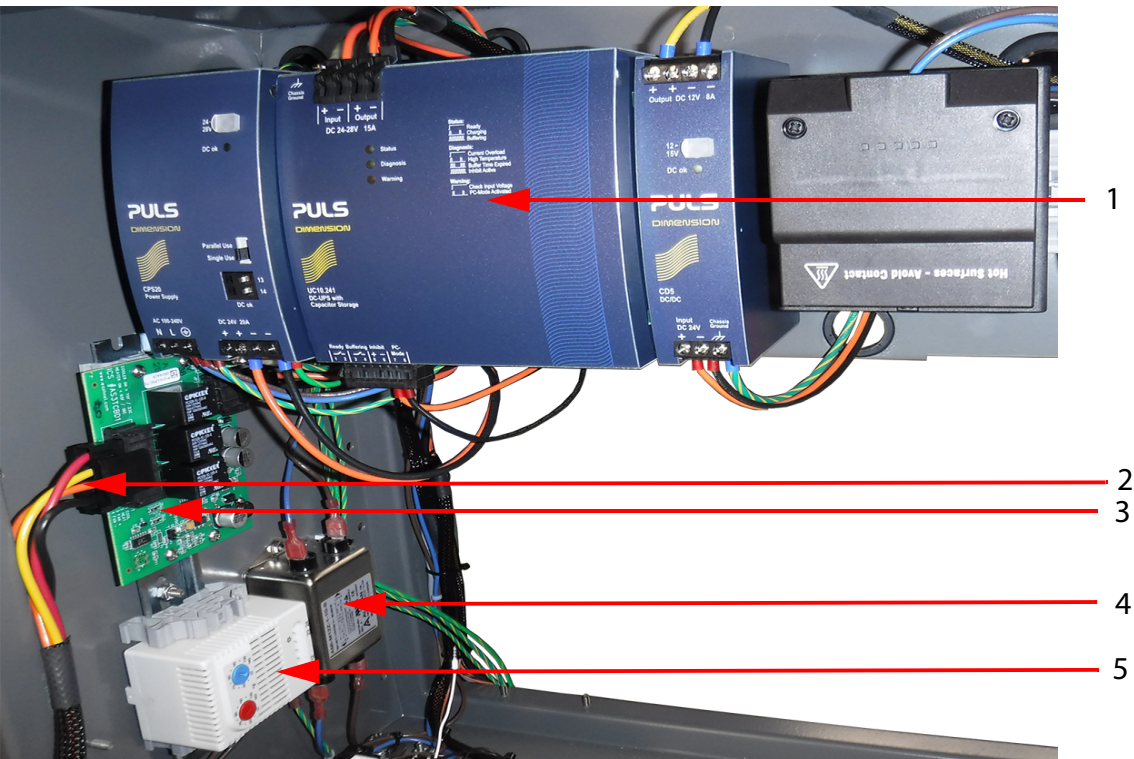
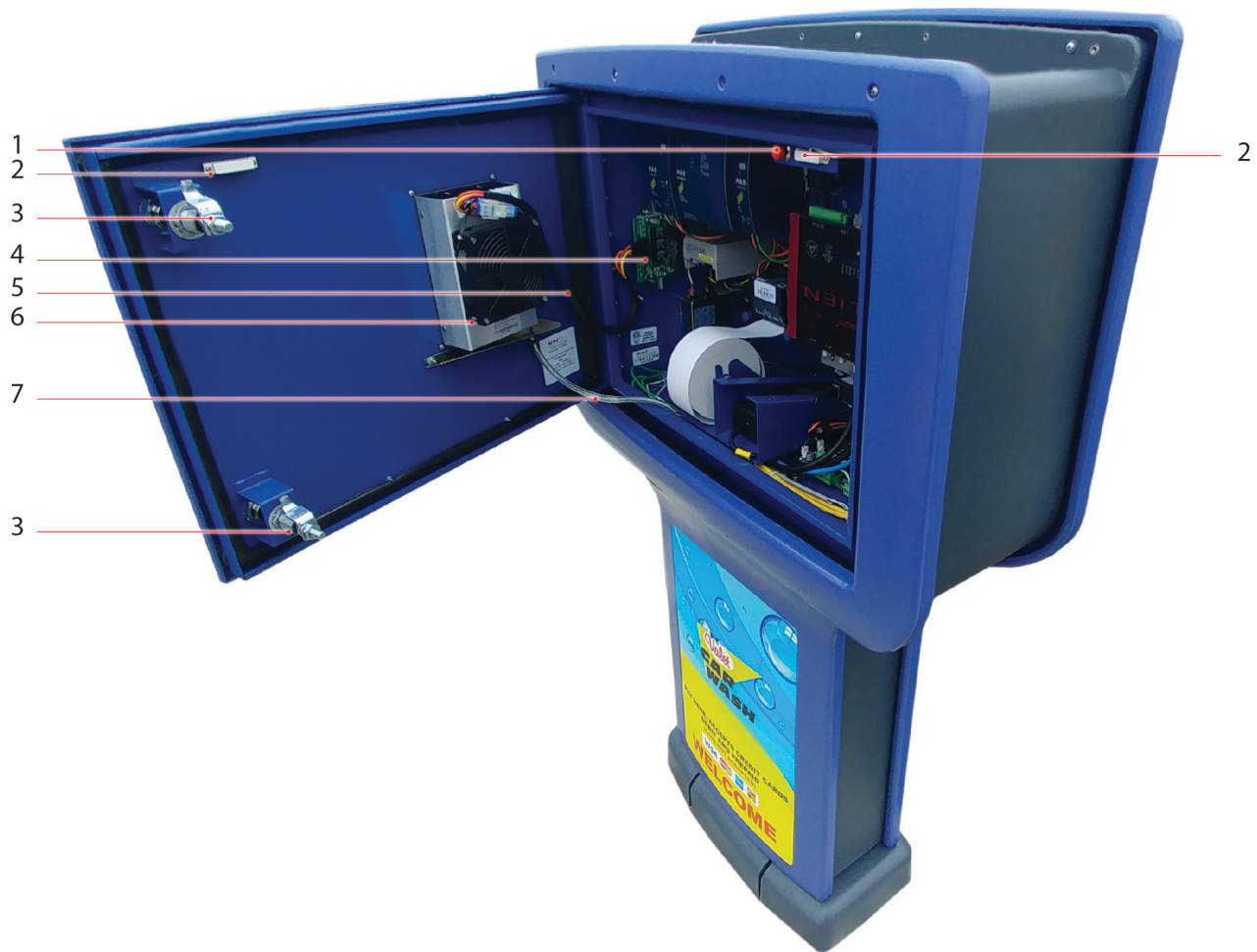


Figure 29. Interior rear left side of Auto Sentry® Petro

Table 5: Interior rear left side of Auto Sentry® Petro

#	ICS Part Number	Description
	SURGEPROTECT 120 VAC SURGEPROTECT1 240 VAC	Surge Protector (Not Shown)
1	PWRPULSUPS PWRPULS24V PWRPULS12V	UPS 24V Power Supply 12V Power Supply
2	AS3CBL21A	24 Volt (Low Voltage) power cable for the heat exchangers
3	H/CCONTROLBD1	Heater/cooler control board
4	ASEMIFILTER	EMI filter for AC V
5	AS2THERMCOOL	Thermostat for cooling

## Interior Rear Door Components

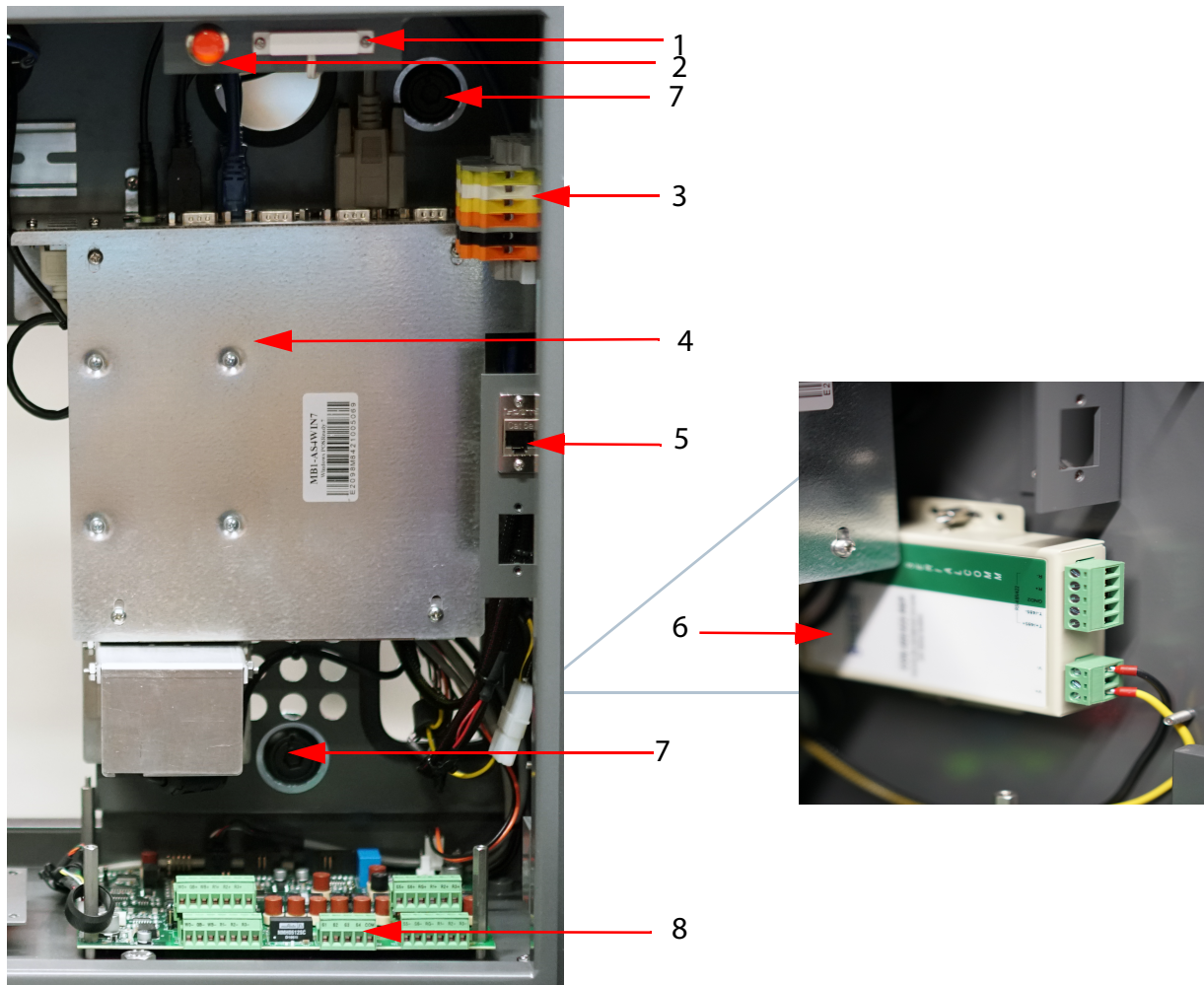


**Figure 30. Rear Door Components, Interior**

**Table 6: Rear Door Components, Interior**

#	ICS Part Number	Description
1	ASPUSHBUT	Service screen button
2	AS3DRSW	Door Switch (2 pieces)
3	ASDRLATCH	Complete latch assembly
4	H/CCONTROLBD1	Heater/cooler control board
5	AS2CBL61	24 Volt (Low Voltage) power cable for the heat exchangers
6	AS3HEATCOOL-1	Heat exchanger assembly Includes heat exchanger (AS3HEATCOOL), cable with size 14 AWG wires for heating and cooling (AS2CBL52), and socket for heater relay (AS2HEATSOCK).
7	AS2HEATDRHOSE	4' Condensation hose

## Interior right-side



**Figure 31. Interior right-side**

**Table 7: Interior back right-side**

#	ICS Part Number	Description
1	AS3DRSW	Door Switch (2 pieces)
2	ASPUSHBUT	Service Screen button
3	AS4-TB-1-A	RFID Terminal Block Assembly
4		Motherboard per site specifics
5	NETRJ45CO	Network Coupler
6	COMCONVEXPWR1	Standard Fuel Converter (Optional)
7	ASDRLATCH	Latch Assembly
8	ASBDSIO	SIO board

# Roto Molded Auto Sentry® Petro Parts

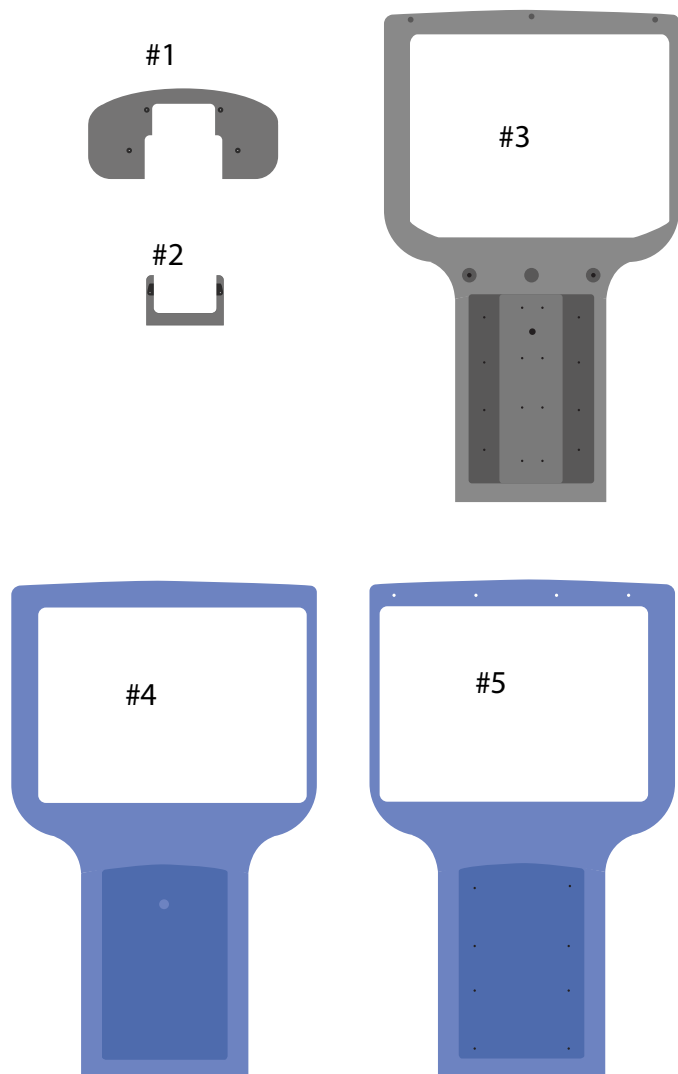


Figure 32. Roto Molded Auto Sentry® Petro Parts

Table 8: Roto Molded Plastic Parts

#	ICS Part Number	Description
1	AS4PLAST3	Base Front
2	AS4PLAST2	Base Back
3	AS4PLAST1	Gray Cover
4	AS4PLASTF	Blue Front Cover
5	AS4PLASTB	Blue Back Cover

# Document Change History

---

Table 9: Document Change History

Document Version	Dates	Contributor Initials	Description
3.8	5/14/2020	WLS, BB	Removed Power Distribution Box
3.9			
4.0	6/2/2021	WLS, CB	Updated Bag lettering, Drawings, and Part Numbers



If you have any questions or concerns, please contact ICS Technical Support: 800-246-3469.

Corporate Office: 81 Highland Avenue, Suite 300, Bethlehem, PA 18017

[icscarwashsystems.com](http://icscarwashsystems.com) | 800.642.9396

Defining the World of Car Wash Technology